

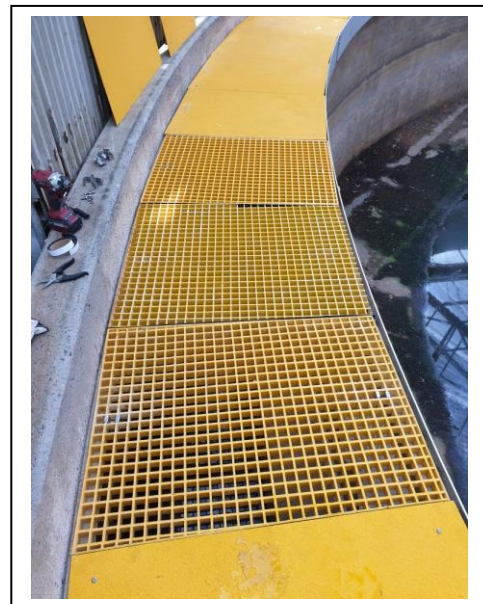
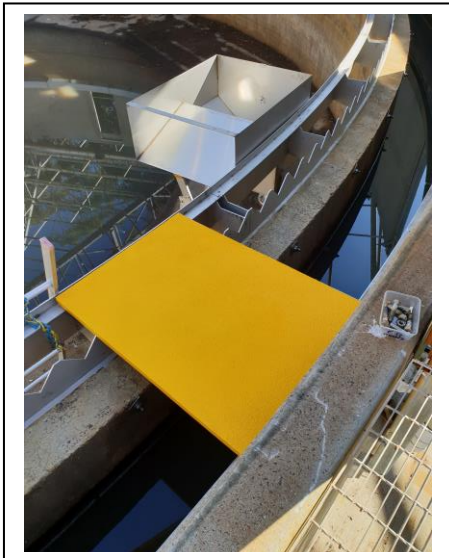
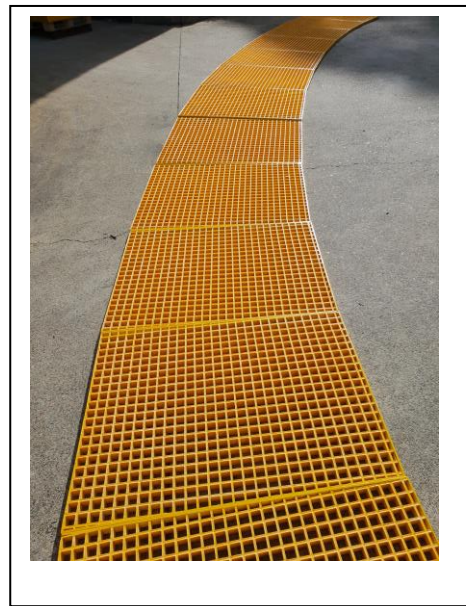
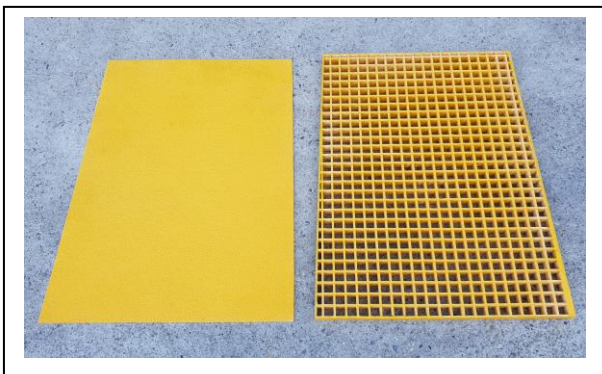


Water and Waste Water

Staircare SC-R is positioned to assist in all forms of water and wastewater infrastructure, upgrades, maintenance a new installations. FRP/GRP composite materials offer high corrosion resistance and are particularly well suited for water and waste water applications.

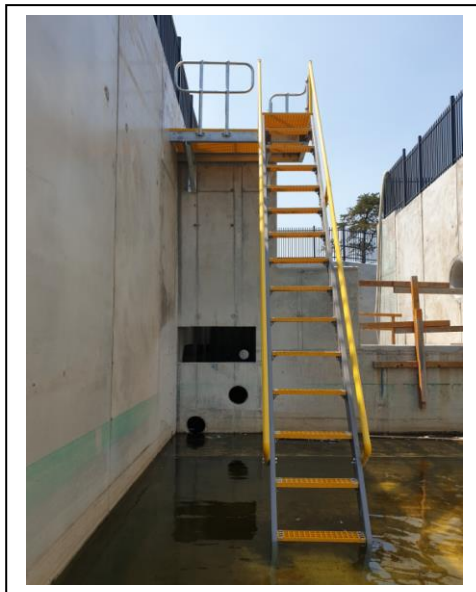
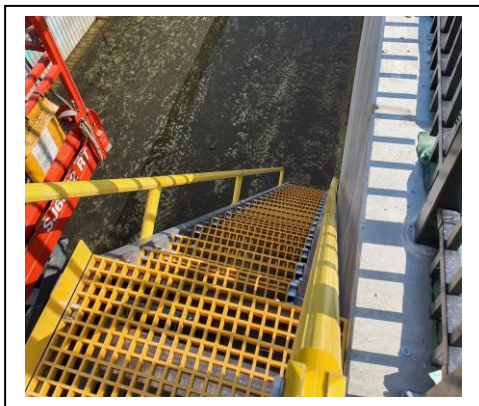
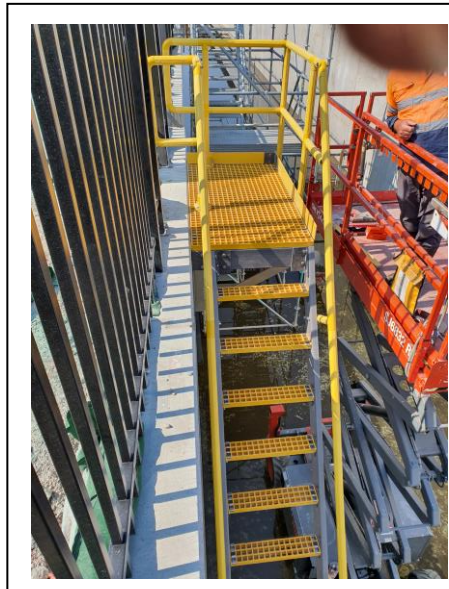
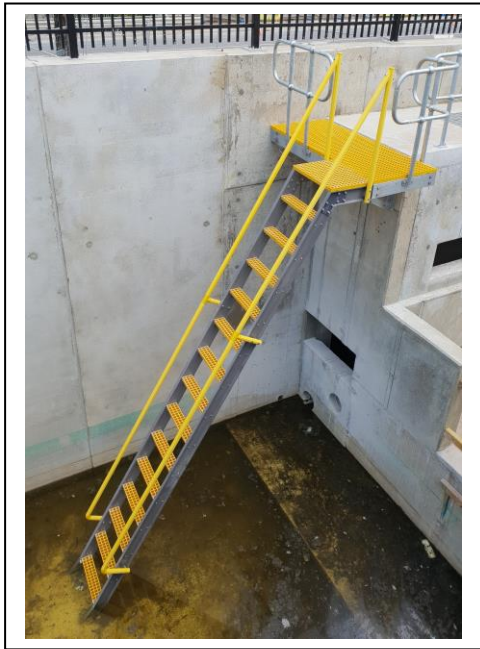
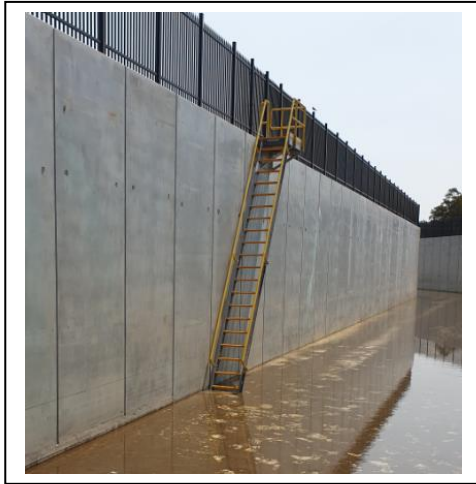
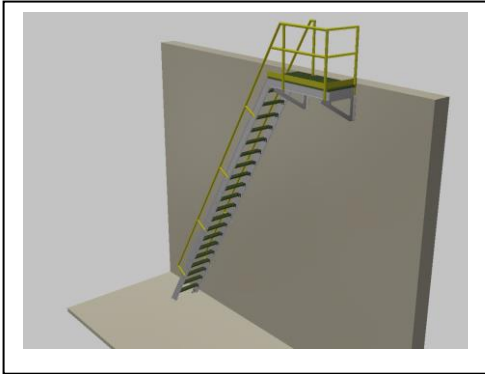
SC-R odour control covers

SC-R odour control covers, including segmented SC-R 38 x 38 square mesh sections complete with matching removable SC-R anti slip plate covers with silicon carbide anti slip grit to form a perfect circular walkway.



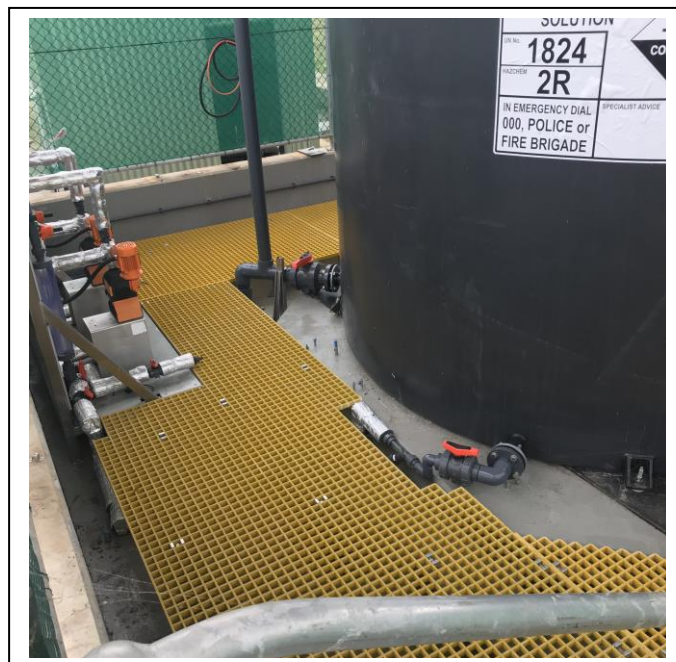
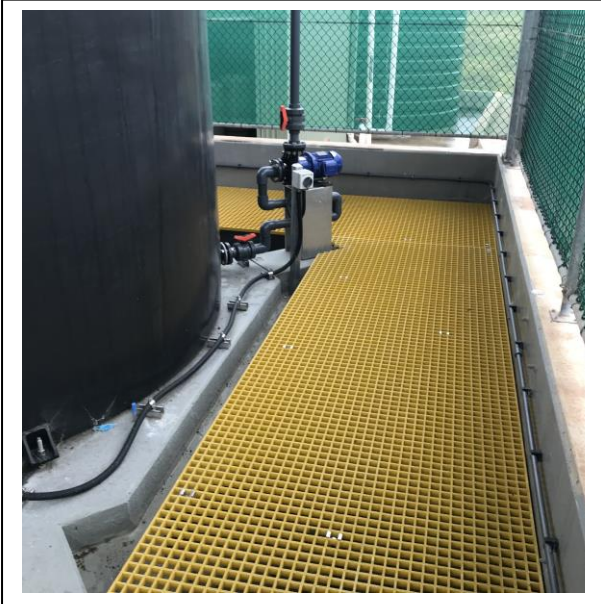
SC-R Drainage Access Stair Ladders

SC-R large drainage channel 6 – 7 meter deep FRP access stair ladders with platforms. From concept design to fabrication and supply.



Waste Water Treatment

Access path including SC-R38x38x38 FRP Square Mesh with silicon carbide anti-slip grit installed on SC-R152x42x9.5mm thick C-Channel Structural supports.



[Staircare Australia Pty Ltd](#)

[2/84 Old Pittwater Road, Brookvale NSW 2100, Australia](#)
[Telephone: +61 \(2\) 9939 3838](tel:+61299393838) **[Website: www.staircare.com.au](http://www.staircare.com.au)**
[Email:- info@staircare.com.au](mailto:info@staircare.com.au)